



Myrtle Cottages No. 4

Little Porth, St Mary's, TR21 0JG



Sleeps 4 | Friday Change over

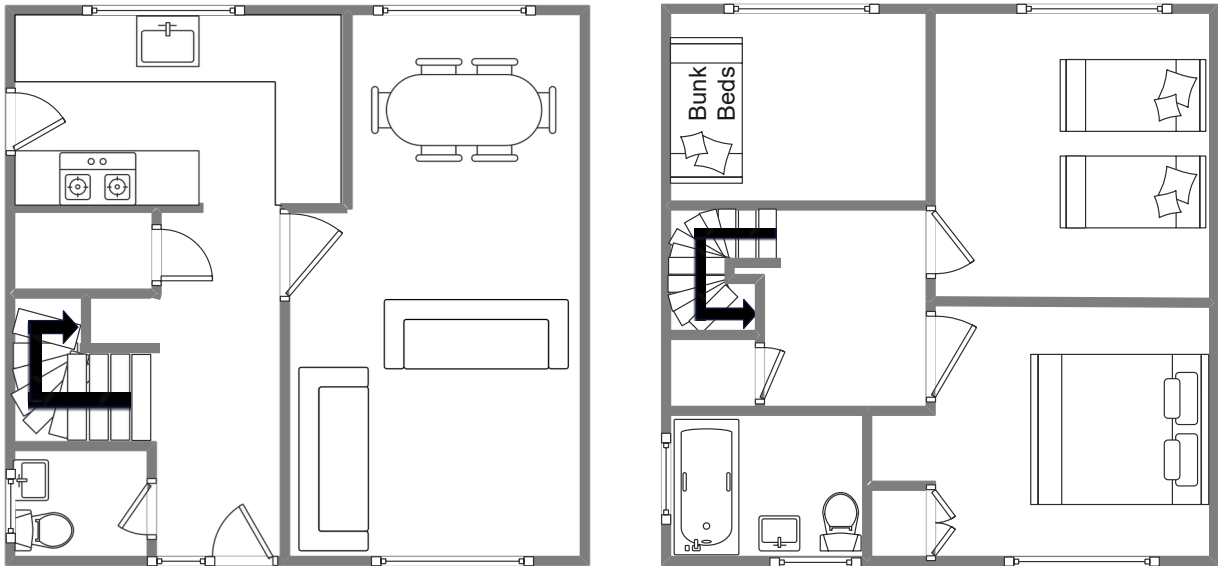
- Double, Twin and Bunk Arrangements
- Children Welcome
- Laundry Facilities
- Close to town centre
- Internet access
- Convenient for beaches

A modern semi-detached house located in a quiet pedestrian precinct, which enjoys views from the main bedroom to Porthcressa Bay stretching to Peninnis Head.

The accommodation sleeps up to six guests in three upstairs bedrooms - one double, one twin and one bunk bedded room. There is also a family bathroom on this level while downstairs houses a fitted kitchen, a lounge/dining room, and cloakroom.

There is a small enclosed garden with outdoor seating to the front of the premises. Myrtle Cottages are situated close to the centre of Hugh Town so local amenities are within easy walking distance, including the quay for your boating requirements.

Layout



Getting to the property

Map of St Marys



Directions from the Quay | Walking time: 8-10 minutes

Head towards the entrance to the quay
 Turn left at The Mermaid Inn on to Hugh Street
 Enter arch by next to Post office
 At the end of the lane cross the road

Take alleyway straight ahead
 Turn right at end of alleyway
 Continue to steps
 Myrtle Cottages are on your right

What3words:wealth.symphony.fizzled